

# METAL MC RANGE

## MC-SM5-VHBFR PRODUCT GUIDE

### MC-SM5-VHBFR Metal Male Clip – Adhesive Mount Fire-rated

The Fastmount Metal Range was designed for demanding applications that require fire resistance and heavy load bearing. The surface mount male provides a rapid install fixing compatible with the MC-F5 (11lb pull-out load) and MC-F10 (22lb pull-out load), with the option to screw or rivet fix to the panel using the self-adhesive fix using the MC-SM5-VHBFR. The MC-SM5-VHBFR is supplied with fire-rated VHB adhesive backing pre-applied for rapid panel mounting. Gap between panel and substrate with MC-SM5-VHBFR: 1.9". Refer to Panel Offset Guide for gap between substrate and panel, pull out and shear loads.

Note: For use with wall panels only, not suitable for ceiling panel installation.

#### BENEFITS

- Stainless steel clip withstands high temperatures
- MC-SM5-VHBFR supplied with fire-resistant tape attached
- Simple install with adhesive (MC-SM5-VHBFR)
- 11lb pull out load with MC-F5
- 22lb pull out load with MC-F10

#### APPLICATIONS

- Marine, architectural, aviation and RV
- Suitable for interior wall panels only
- Aluminium honeycomb panels
- Lightweight fire-rated panels
- Fire-rated heavyweight panels
- High density panels, where surface mount is required
- Interior FR alucobond panels
- Fire-rated access panels

#### MC-SM5-VHBFR



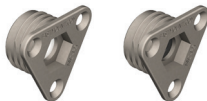
#### MATERIAL:

306 stainless steel

#### USE WITH:

MC-F5

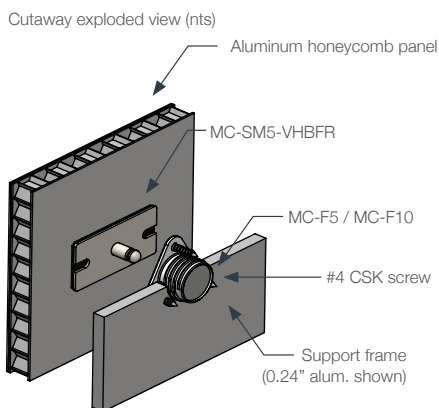
MC-F10



#### MORE INFO:

Installation Guide MC-SM5-VHBFR  
Panel Offset Guide

**INSTALLATION:** Partially exploded through section showing typical installation method



For installation into LP-F8, follow steps 1-4 on LP-F8 install guide.