

METAL MC RANGE

MC-M5 PRODUCT GUIDE

MC-M5 Metal Clip Male - 11lb

The MC-M5 self taps into the back of the panel before being installed with the MC-F5. Innately fire resistant and ideal for heavy load bearing. Refer to Panel Offset Guide for gap between substrate and panel, pull out and shear loads. Note: For use with wall panels only, not suitable for ceiling panel installation.

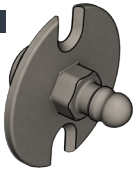
BENEFITS

- Metal clip to withstand high temperatures
- Allows for tolerance and panel flex (self centring)
- Provides acoustic and vibration isolation
- 11lb pull out load
- Self tapping and screw fit mounting options

APPLICATIONS

- Fire-rated panels
- Panels in fire egress paths
- Suitable for interior wall panels only
- Mounting of curved panels
- Variety of substrates

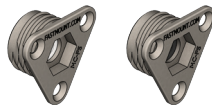
MC-M5



USE WITH:

MC-F5

MC-F10



MATERIAL:

Silver/white centre EZDA 3 triple plated, SS spring

MORE INFO:

Installation Guide MC-M5/F5/F10
Clip Layout Guide TD-02, 09, 12
Panel Offset Guide

INSTALLATION: Partially exploded through section showing typical installation method

