

STRATLOCK SL RANGE

SL-M18 & SL-M18-FR PRODUCT GUIDE

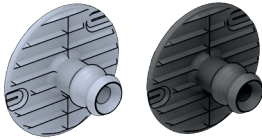
SL-M18 Stratlock® Male 39.6lb

SL-M18-FR Stratlock® Male 39.6lb - Fire-rated

The SL-M18 attaches to the panel, and mounts into either SL-FA, SL-SFA, SL-FB or SL-FC for rapid mounting of heavy panels to aluminum or steel extrusion framework. The SL-M18-FR/ SL-M18-FR can be combined with fire-rated female clips from the Stratlock Range where fire-resistance is required. Featuring a two-stage engagement head, the SL-M18 engages into the new solid internal load chassis to give 5/32" supported movement in any direction before locking into place. Option to fix into panel with 1 or 3 #8 screws or a 2 part epoxy. Combined with any female clip from the Stratlock Range, the SL-M10/SL-M18 / SL-M18-FR has an 10/39.6lb pull out load and high shear strength. No special tools required for installation. Patent Pending. Refer to Panel Offset Guide for gap between substrate and panel, pull out and shear loads.

SL-M18 39.6lb

SL-M18-FR 39.6lb



MATERIAL:

Light gray GF Nylon
Black Shinite

USE WITH:

SL-FA / SL-FA-FR
SL-SFA / SL-SFA-FR
SL-FB / SL-FB-FR
SL-FC / SL-FC-FR

MORE INFO:

Installation Guide SL-FA,
SL-SFA, SL-FB, SL-FC
Clip Layout Guide TD-15
Panel Offset Guide



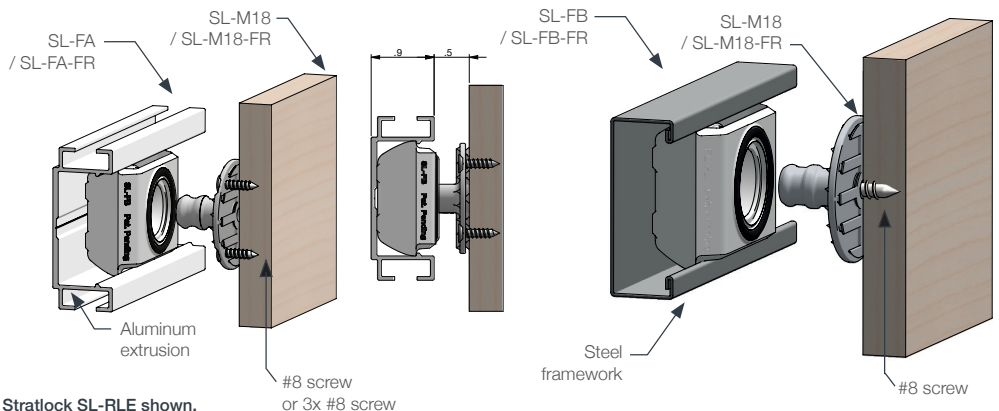
BENEFITS

- Strongest mounting available
- Supported movement of the panel 5/32" in any direction before locking into final position.
- Screw fix with 1 or 3 #8 screws, or a 2 part epoxy
- No special tools required
- Acoustic isolation between panel and frame
- Fits into SL-FA / SL-FA-FR, SL-SFA / SL-SFA-FR, SL-FB / SL-FB-FR and SL-FC / SL-FC-FR
- 39.6lb pull out load & high shear strength

APPLICATIONS

- Commercial interior fit out
- Mounting heavier ceiling and wall panels
- Hotels, hospitals, retail, residential
- Superyacht deckheads
- Fire-rated interiors

INSTALLATION: Partially exploded through section showing typical installation method



STRATLOCK SL RANGE

SL-M18 & SL-M18-FR PRODUCT GUIDE



UL Product iQ™

D202G30@

File Number: E107536

Yellow Card®



COMPANY

SHINKONG SYNTHETIC FIBERS CORP

223 YEN PING RD SEC 3

PIN CHENG, TAOYUAN HSIEN 324 Taiwan

MODEL INFO

D202G30@

Polybutylene Terephthalate (PBT), glass reinforced, furnished as pellets@ – Ball pressure temperature of 200 deg. C, tested in accordance with IEC 695.10.2 and IEC 950 5.4.2

FLAMMABILITY PROPERTIES	VALUE	TEST METHOD
Flammability		ANSI/UL 94
0.3 mm, Color: NC, BK	V-0	
0.71 mm, Color: ALL	V-0	
1.5 mm, Color: ALL	V-0	
3.0 mm, Color: ALL	V-0	

ISO/IEC FLAMMABILITY PROPERTIES	VALUE	TEST METHOD
Flammability		IEC 60695-11-10
0.3 mm, Color: NC, BK	V-0	
0.71 mm, Color: ALL	V-0	
1.5 mm, Color: ALL	V-0	
3.0 mm, Color: ALL	V-0	

STRATLOCK SL RANGE

SL-M18 & SL-M18-FR PRODUCT GUIDE

ELECTRICAL PROPERTIES	VALUE	TEST METHOD
Hot-wire Ignition (HWI)		UL 746A
0.3 mm	4 PLC	1/3
0.71 mm	3 PLC	
1.5 mm	2 PLC	
3.0 mm	0 PLC	
High Amp Arc Ignition (HAI)		UL 746A
0.3 mm	0 PLC	
0.71 mm	0 PLC	
1.5 mm	0 PLC	
3.0 mm	0 PLC	
Comparative Tracking Index (CTI)	3 PLC	UL 746
Dielectric Strength	23 kV/mm	ASTM D149
High Voltage Arc Tracking Rate (HVTR)	4 PLC	
Volume Resistivity	1.0E+15 ohms-cm	ASTM D257/IEC 60093
High Voltage, Low Current Arc Resistance	6 PLC	
THERMAL PROPERTIES	VALUE	TEST METHOD
Relative Thermal Index - Electrical Strength		UL 746B
0.3 mm	75 °C	
0.71 mm	140 °C	
1.5 mm	140 °C	
3.0 mm	140 °C	

STRATLOCK SL RANGE

SL-M18 & SL-M18-FR PRODUCT GUIDE

Relative Thermal Index - Mechanical Impact		UL 746B
0.3 mm	75 °C	
0.71 mm	120 °C	
1.5 mm	130 °C	
3.0 mm	130 °C	
Relative Thermal Index - Mechanical Strength		UL 746B
0.3 mm	75 °C	
0.71 mm	140 °C	
1.5 mm	140 °C	
3.0 mm	140 °C	
Ball Pressure Temperature	200 °C	

<https://iq.ulprospector.com/en/profile?e=597246>

2/3

2020/5/18

D202G30@ | UL Product iQ

Report Date: 1987-07-13
Revision Date: 2006-11-28

The appearance of a company's name or product in this database does not in itself assure that products so identified have been manufactured under UL's Follow-Up Service. Only those products bearing the UL Mark should be considered to be Certified and covered under UL's Follow-Up Service. Always look for the Mark on the product.

UL permits the reproduction of the material contained in the Online Certification Directory subject to the following conditions: 1. The Guide Information, Assemblies, Constructions, Designs, Systems, and/or Certifications (files) must be presented in their entirety and in a non-misleading manner, without any manipulation of the data (or drawings). 2. The statement "Reprinted from the Online Certifications Directory with permission from UL" must appear adjacent to the extracted material. In addition, the reprinted material must include a copyright notice in the following format: "© 2020 UL LLC"