

STRATLOCK SL RANGE

SL-M10 PRODUCT GUIDE

SL-M10 Stratlock® Male 22lb

The male SL-M10 attaches to the panel, and mounts into either SL-FA, SL-SFA, SL-FB or SL-FC for rapid mounting of heavy panels to aluminum or steel extrusion framework, or solid substrates. The SL-M10 has a lower pull out load of 22lb for more frequently removed panels still requiring strength and high shear loading. Featuring a unique two-stage engagement head, the SL-M10 engages into the new solid internal load chassis to give 5/32" supported movement in any direction before locking into place. Option to fix into panel using 1 x #8 screw, 3 x #8 screws or adhesive fix with a 2 part epoxy. No special tools required for installation. Patent Pending. Refer to Panel Offset Guide for gap between substrate and panel, pull out and shear loads.

BENEFITS

- 22lb pull out load
- Supported movement of the panel 5/32" in any direction before locking into final position.
- Option to screw fix with 1 x #8, or 3 x #8 screws
- Option to adhesive fix with a 2 part epoxy adhesive
- No special tools required for install
- Acoustic isolation between panel and frame
- Fits into SL-FA, SL-SFA, SL-FB or SL-FC

APPLICATIONS

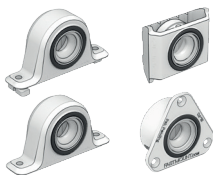
- Commercial interior fit out
- Mounting ceiling and wall panels
- Hotels, hospitals, retail, residential
- Superyacht deckheads

SL-M10 22lb



USE WITH:

SL-FA
SL-SFA
SL-FB
SL-FC



MATERIAL:

White Nylon

MORE INFO:

Installation Guide SL-FA, SL-SFA, SL-FB, SL-FC
Clip Layout Guide TD-15
Panel Offset Guide

INSTALLATION: Partially exploded through section showing typical installation method

