

STANDARD PC RANGE

PC-M2H PRODUCT GUIDE

PC-M2H Self Tapping Male - 22lb

The heavy duty self tapping clip, PC-M2H adds to the Standard Range. Specifically designed for thicker panels with increased loading requirements, where PC-M1B is not strong enough, with a 22lb pull out load per clip set. Compatible with all female clips in the Standard Range, and installs into panels with a minimum 5/16" thickness.

BENEFITS

- Self-aligning installation without adhesives
- Perfect panel alignment secure mounting every time
- Remove and refit panels in any sequence 100+ times
- Saves time and reduces cost
- 22lb pull out load per clip
- Allows for flexing and expansion of panel and support frame materials

APPLICATIONS

- Covered or painted panels with minimum 5/16" thickness
- Ceiling and wall panels
- Exterior deckhead panels (marine only)
- Refits and upgrades of existing installation
- Variety of substrates

PC-M2H 22lb



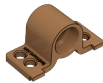
USE WITH:

PC-F1A

PC-RF1

PC-SF1

PC-AF1



MATERIAL:

Black Acetal copolymer

MORE INFO:

Installation Guide PC-F1A, SF1, RF1
Clip Layout Guide TD-02, 09, 12
Panel Offset Guide

INSTALLATION:

Partially exploded through section showing typical installation method

