



# TEXTILE TC RANGE

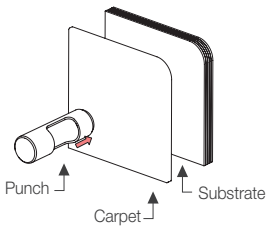
## TC-CF3 & TC-CM6 INSTALLATION GUIDE

### TC-CF3 & TC-CM6 Carpet Clip Range

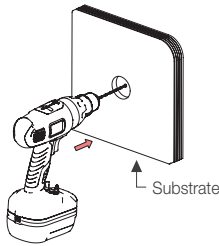
TC-CF3	TC-CM6	USE WITH:	INSTALL WITH:
		#6 CSK stainless steel screw or M6 machine screws	CT-10 5/8" hole punch 

#### INSTALLATION STEPS:

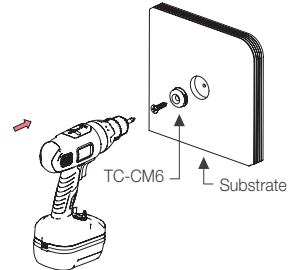
- 1 Punch 5/8" hole in carpet



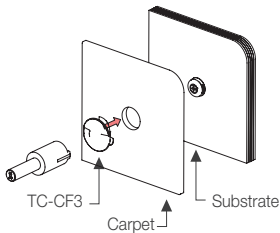
- 2 Drill 1/8" hole in substrate



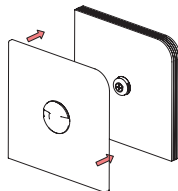
- 3 Screw fix TC-CM6 with #6 CSK stainless steel screw



- 4 Install TC-CF3 with CT-10



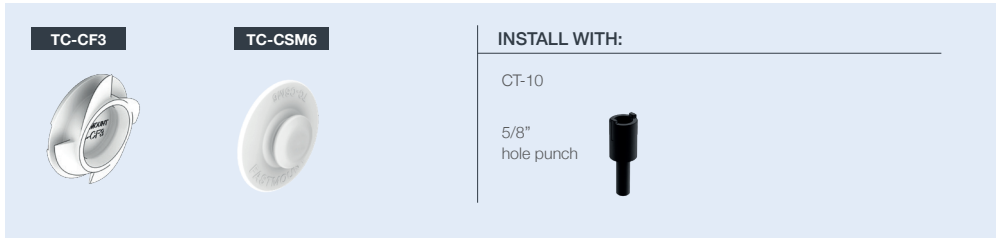
- 5 Apply carpet to substrate



# TEXTILE TC RANGE

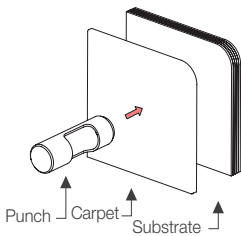
## TC-CF3 & TC-CSM6 INSTALLATION GUIDE

### TC-CF3 & TC-CSM6 Carpet Clip Range

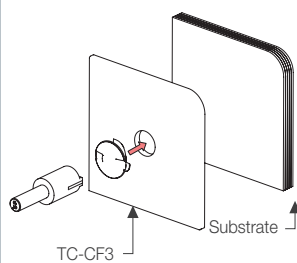


#### INSTALLATION STEPS:

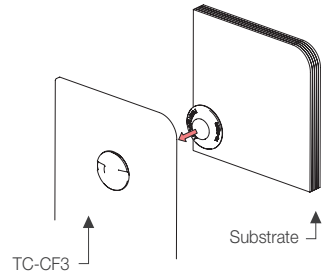
- 1 Punch 5/8" hole in carpet



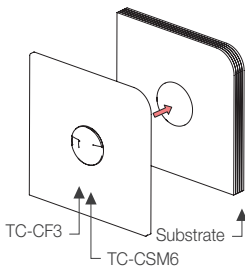
- 2 Install TC-CF3 with CT-10



- 3 Insert TC-CSM6 into TC-CF3



- 4 Remove adhesive backing from TC-CSM6



- 5 Apply carpet to substrate

