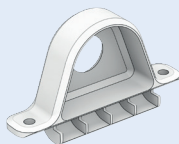


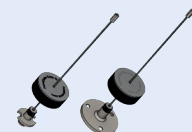
STRATLOCK SL RANGE

SL-SMT1 INSTALLATION GUIDE

SL-SMT1 Stratlock® Sidemount - Installation with PanelSafe Easyfit

SL-SMT1

USE WITH:

PS-150E, PS-S150E


INSTALL WITH:

#8 screws

INSTALLATION STEPS Installation with PanelSafe

<p>1 Insert SL-SMT1 into SL-RLE</p>	<p>2 Click into place</p>	<p>3 Use #8 screws to fix SL-SMT1 into position</p>
<p>4 Pass the PS-150E or PS-S150E through SL-SMT1 and attach to panel with appropriate Stratlock Range clips already installed</p>	<p>5 Clip panel into position</p>	<p>Stratlock SL-RLE shown.</p>