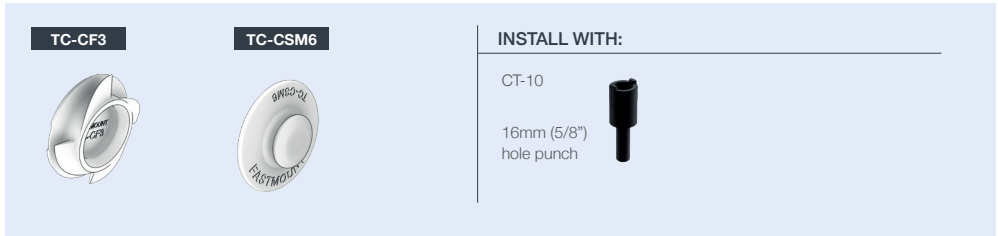


TEXTILE TC RANGE

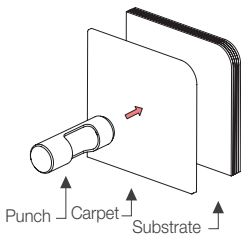
TC-CF3 & TC-CSM6 INSTALLATION GUIDE

TC-CF3 & TC-CSM6 Carpet Clip Range

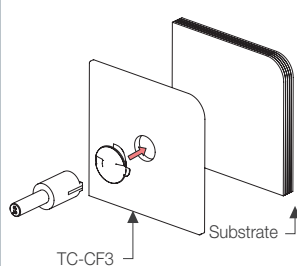


INSTALLATION STEPS:

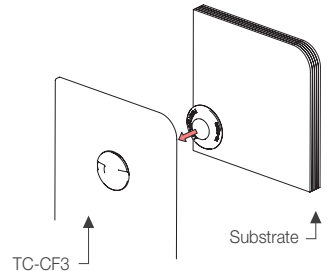
- 1** Punch 16mm (5/8") hole in carpet



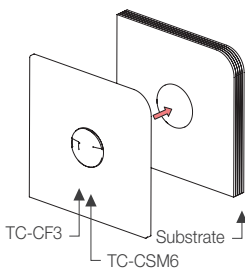
- 2** Install TC-CF3 with CT-10



- 3** Insert TC-CSM6 into TC-CF3



- 4** Remove adhesive backing from TC-CSM6



- 5** Apply carpet to substrate

