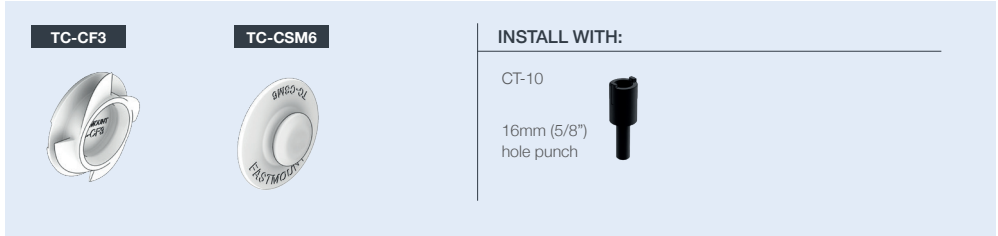


TEXTILE TC RANGE

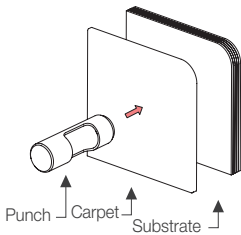
TC-CF3 & TC-CSM6 INSTALLATION GUIDE

TC-CF3 & TC-CSM6 Carpet Clip Range

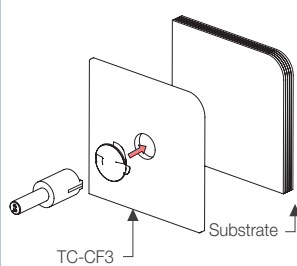


INSTALLATION STEPS:

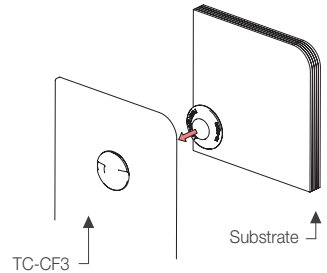
- 1** Punch 16mm (5/8") hole in carpet



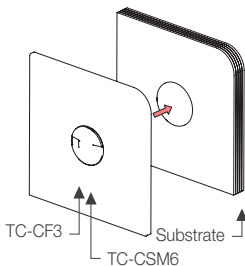
- 2** Install TC-CF3 with CT-10



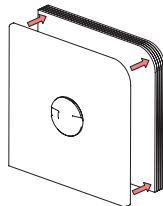
- 3** Insert TC-CSM6 into TC-CF3



- 4** Remove adhesive backing from TC-CSM6






- 5** Apply carpet to substrate



TEXTILE TC RANGE

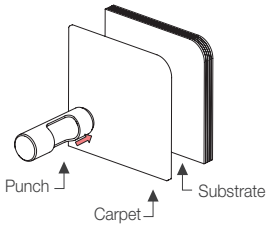
TC-CF3 & TC-CM6 INSTALLATION GUIDE

TC-CF3 & TC-CM6 Carpet Clip Range

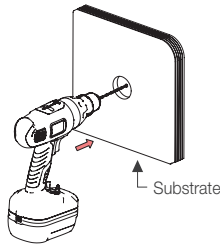
TC-CF3	TC-CM6	USE WITH:	INSTALL WITH:
		#6 CSK stainless steel screw or M6 machine screws	CT-10 16mm (5/8") hole punch 

INSTALLATION STEPS:

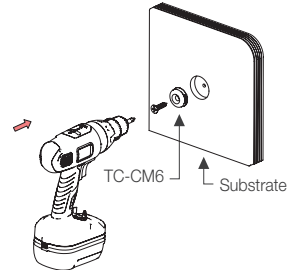
- 1** Punch 16mm (5/8") hole in carpet



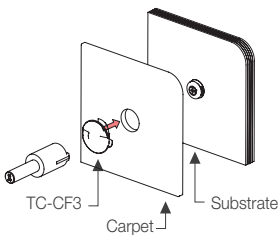
- 2** Drill 3mm hole in substrate



- 3** Screw fix TC-CM6 with #6 CSK stainless steel screw



- 4** Install TC-CF3 with CT-10



- 5** Apply carpet to substrate

