

STRATLOCK SL RANGE

SL-FC & SL-FC-FR PRODUCT GUIDE

STRATLOCK

SL-FC Stratlock® Female Flush Mount

SL-FC-FR Stratlock® Female Flush Mount - Fire Rated

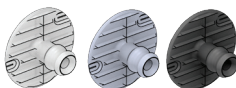
The SL-FC / SL-FC-FR provides rapid installation of heavy panels to solid substrates. Designed specifically for contract interior fitout applications to reduce onsite installation time. The SL-FC is ideal for applications where framework or grid structure is not available (e.g. sheet metal, aluminium, fibreglass, MDF or plywood). SL-FC fits into a pre-drilled $\varnothing 40\text{mm}$ hole, and screw fixes with $3 \times \#5$ screws. The Patent Pending internal load chassis of the female clip creates 4mm supported movement of the panel in any direction before locking into place with a 10 or 18kg pull out load, depending on the male clip used (SL-M10 or SL-M18). Distance between panel and substrate when installed is 13.5mm at first click, and 7mm when pressed into final position. Patent Pending. Refer to Panel Offset Guide for gap between substrate and panel, pull out and shear loads.

SL-FC

SL-FC-FR


USE WITH:

SL-M10, SL-M18, SL-M18-FR



MATERIAL:

White Acetal copolymer/Rubber ring
Off white Duranex/Rubber ring

MORE INFO:

Installation Guide SL-FC
Clip Layout Guide TD-19, 20
Panel Offset Guide

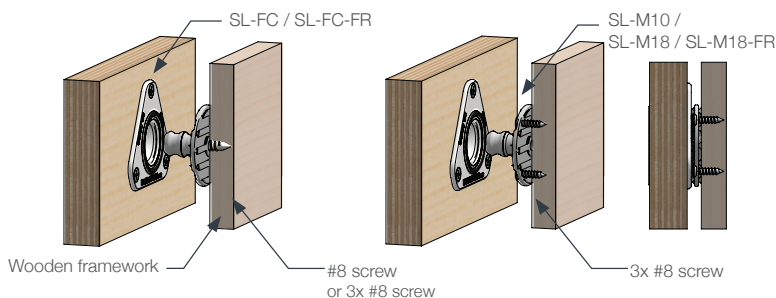
BENEFITS

- Strongest available fixing from Fastmount
- Flush fit for solid substrates
- Supported movement of the panel 4mm in any direction before locking into final position
- No special tools required for installation
- Acoustic isolation between panel and frame
- Option of 10kg or 18kg pull out load with SL-M10 or SL-M18
- 7mm clearance between panel and frame

APPLICATIONS

- Commercial interior fitout
- Residential interior fitout
- Architectural applications
- Mounting heavy wall panels
- Aluminium, sheet steel, fibreglass, plywood or MDF substrates

INSTALLATION: Partially exploded through section showing typical installation method



STRATLOCK SL RANGE

SL-FC & SL-FC-FR PRODUCT GUIDE

Below are the associated certifications for the above-mentioned
Fire Rated materials used in the SL-FC-FR:
UL-Yellow card for Duranex PBT

Component - Plastics

E213445

Guide Information

POLYPLASTICS CO LTD

18-1 KONAN 2-CHOME, MINATO-KU TOKYO 108-8280 JP

2016(e)

Polybutylene Terephthalate (PBT) "Duranex", furnished as pellets

Color	Min. Thk (mm)	Flame Class	HWI	HAI	RTI Elec	RTI Imp	RTI Str
ALL	0.44	V-0	-	-	110	75	110
	0.75	V-0	4	0	130	120	130
	1.5	V-0	3	0	130	120	130
NC	3.0	5VA	2	0	130	120	130

Comparative Tracking Index (CTI): 2

Dielectric Strength (kV/mm): 39

High-Voltage Arc Tracking Rate (HVTR): 3

Dimensional Stability (%): 0

Inclined Plane Tracking (IPT) kV: -

Volume Resistivity (10^8 ohm-cm): 16Surface Resistivity (10^8 ohms/square): -

High Volt, Low Current Arc Resis (D495): 6

(e) - Virgin and reground up to 50 by weight incl. have the same basic material characteristics above a minimum thickness of 0.75 mm

ANSI/UL 94 small-scale test data does not pertain to building materials, furnishings and related contents. ANSI/UL 94 small-scale test data is intended solely for determining the flammability of plastic materials used in the components and parts of end-product devices and appliances, where the acceptability of the combination is determined by UL.

Report Date: 2000-11-15

Last Revised: 2014-02-10

© 2020 UL LLC

**IEC and ISO Test Methods**

Test Name	Test Method	Units	Thk (mm)	Value
Flammability	IEC 60695-11-10, IEC 60695-11-20	Class (color)	0.44	V-0 (ALL)
			0.75	V-0 (ALL)
			1.5	V-0 (ALL)

