

STRATLOCK SL RANGE

SL-M18 & SL-M18-FR PRODUCT GUIDE

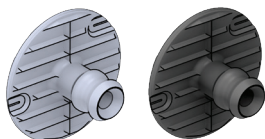
SL-M18 Stratlock® Male 18kg

SL-M18-FR Stratlock® Male 18kg - Fire Rated

The SL-M18 attaches to the panel, and mounts into either SL-FA, SL-SFA, SL-FB or SL-FC for rapid mounting of heavy panels to aluminium or steel extrusion framework. The SL-M18-FR/ SL-M18-FR can be combined with fire-rated female clips from the Stratlock Range where fire-resistance is required. Featuring a two-stage engagement head, the SL-M18 engages into the new solid internal load chassis to give 4mm supported movement in any direction before locking into place. Option to fix into panel with 1 or 3 #8 screws or a 2 part epoxy. Combined with any female clip from the Stratlock Range, the SL-M10/SL-M18 / SL-M18-FR has an 10/18kg pull out load and high shear strength. No special tools required for installation. Patent Pending. Refer to Panel Offset Guide for gap between substrate and panel, pull out and shear loads.

SL-M18 18kg

SL-M18-FR 18kg



MATERIAL:
Light grey GF Nylon
Black Shinite

USE WITH:
SL-FA / SL-FA-FR
SL-SFA / SL-SFA-FR
SL-FB / SL-FB-FR
SL-FC / SL-FC-FR

MORE INFO:
Installation Guide SL-FA,
SL-SFA, SL-FB, SL-FC
Clip Layout Guide TD-15
Panel Offset Guide



BENEFITS

- Strongest mounting available
- Supported movement of the panel 4mm in any direction before locking into final position.
- Screw fix with 1 or 3 #8 screws, or a 2 part epoxy
- No special tools required
- Acoustic isolation between panel and frame
- Fits into SL-FA / SL-FA-FR, SL-SFA / SL-SFA-FR, SL-FB / SL-FB-FR and SL-FC / SL-FC-FR
- 18kg pull out load & high shear strength

APPLICATIONS

- Commercial interior fit out
- Mounting heavier ceiling and wall panels
- Hotels, hospitals, retail, residential
- Superyacht deckheads
- Fire-rated interiors

INSTALLATION: Partially exploded through section showing typical installation method

