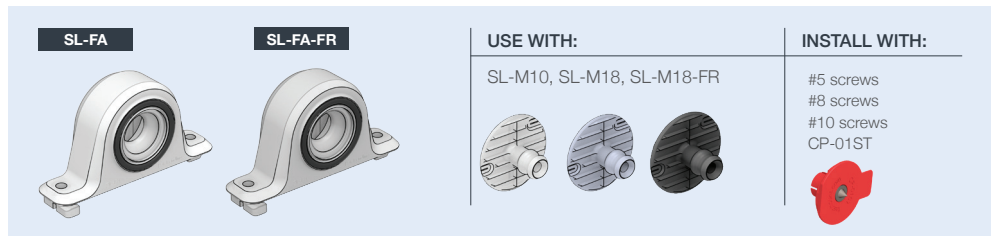


# STRATLOCK SL RANGE

## SL-FA & SL-FA-FR INSTALLATION GUIDE

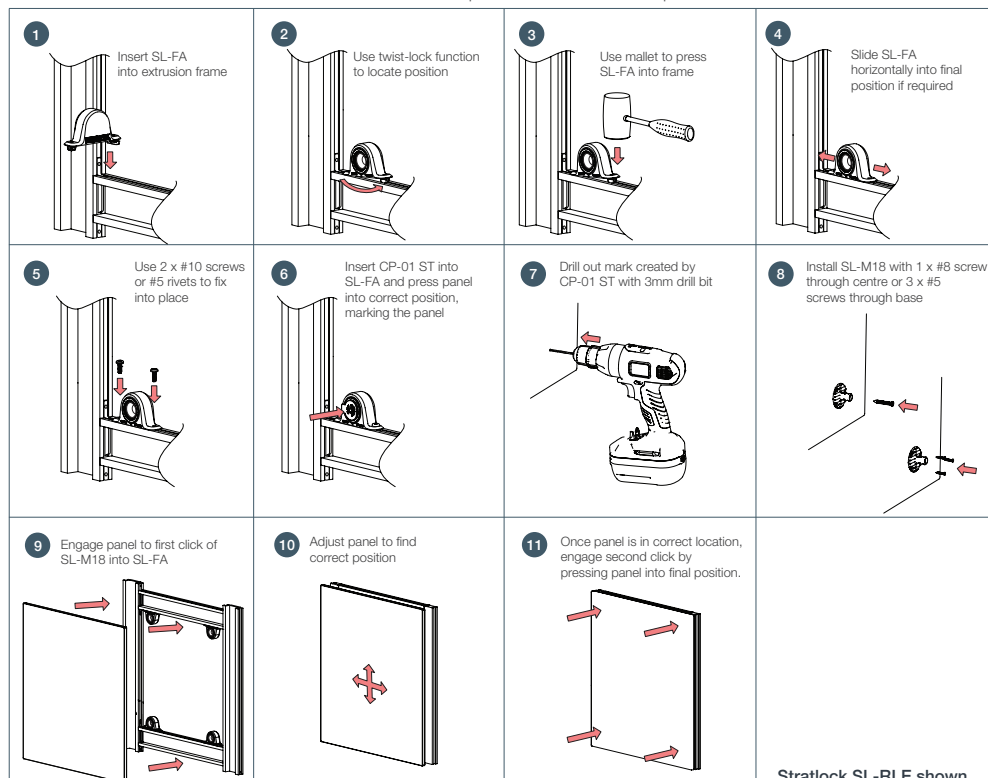
**SL-FA** Stratlock® Range - Screw Fix

**SL-FA-FR** Stratlock® Range - Screw Fix - Fire Rated



### INSTALLATION STEPS

Screw-fix method - follow same steps for fire-rated Stratlock clips

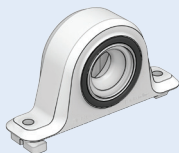


# STRATLOCK SL RANGE

## SL-FA INSTALLATION GUIDE

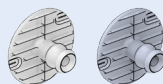
### SL-FA Stratlock® Range - Adhesive Fix

SL-FA



USE WITH:

SL-M10, SL-M18



INSTALL WITH:

A 2 part epoxy adhesive  
#10 screws

#### INSTALLATION STEPS Adhesive fix method

<p><b>1</b> Insert SL-FA into extrusion frame</p>	<p><b>2</b> Use twist-lock function to locate position</p>	<p><b>3</b> Use mallet to press SL-FA into frame</p>	<p><b>4</b> Slide SL-FA horizontally into final position if required</p>
<p><b>5</b> Use 2 x #10 screws or #5 rivets to fix into place</p>	<p><b>6</b> Engage SL-M18 two clicks into SL-FA</p>	<p><b>7</b> 2 part epoxy adhesive to SL-M18</p>	<p><b>8</b> Press panel into place</p>
<p><b>9</b> Use panel support while adhesive dries</p>	<p><b>10</b> Once adhesive has dried, remove panel. Replace and engage one click to adjust panel to find correct position</p>	<p><b>11</b> Once panel is in correct location, engage second click by pressing panel into final position.</p>	<p>Stratlock SL-RLE shown.</p>