

# LOW PROFILE LP RANGE

## LP-SM8H PRODUCT GUIDE

### LP-SM8H Surface Mount Male Screw Fix – 10kg

The LP-SM8H adds a mid-range option to the Low Profile Range. With a 10kg pull out load, the clip is designed for use with plywood or MDF panels that are between 9-16mm thick, or aluminium honeycomb panels, and is compatible with the LP-F8, LP-DF8 or LP-AF8A. The surface mount clip installs easily with 3 x countersink #6 screws, removing the need for special tools for installation. Ideal for large panels with limited panel depth. Refer to Panel Offset Guide for gap between substrate and panel, pull out and shear loads. Note: Minimum 13mm thick drywall to be used with LP-DF8 when using LP-SM8H on panels.

#### BENEFITS

- Invisible panel fixing
- Installs with 3 x #6 countersink screws
- No special tools required
- 10kg pull out load per clip
- Durable design for frequent handling
- Enables non-sequential panel installation
- CNC machine compatibility
- 4mm clearance between panel and substrate
- Screw fix enables installation into wide variety of panel types
- Self-centring - no need for a centrepoint (CP-08ST)

#### APPLICATIONS

- Plywood or MDF panels 9-16mm thick
- Interior panels
- Ceiling panels
- Aluminium honeycomb panels
- Moulded into hull
- Marine and architectural applications

#### LP-SM8H 10kg

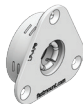


#### USE WITH:

LP-F8



LP-AF8A



LP-DF8



#### MATERIAL:

White Acetal copolymer

#### MORE INFO:

Installation Guide LP-SM8H  
Layout Guide TD-02, TD-08  
Panel Offset Guide

**INSTALLATION:** Partially exploded through section showing typical installation method

