

METAL MC RANGE

MC-SM5 -PRODUCT GUIDE

MC-SM5 Metal Male Clip – Surface Mount

The Fastmount Metal Range was designed for demanding applications that require fire resistance and heavy load bearing. The surface mount male provides a rapid install fixing compatible with the MC-F5 (5kg pull-out load) and MC-F10 (10kg pull-out load), with the option to screw or rivet fix to the panel using the MC-SM5. Gap between panel and substrate with MC-SM5: 3.75mm. Refer to Panel Offset Guide for gap between substrate and panel, pull out and shear loads.

Note: For use with wall panels only, not suitable for ceiling panel installation.

MC-SM5



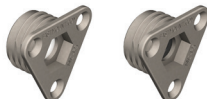
MATERIAL:

306 stainless steel

USE WITH:

MC-F5

MC-F10



MORE INFO:

Installation Guide MC-SM5
Panel Offset Guide

BENEFITS

- Stainless steel clip withstands high temperatures
- Simple install with rivet, screw (MC-SM5)
- 5kg pull out load with MC-F5
- 10kg pull out load with MC-F10

APPLICATIONS

- Marine, architectural, aviation and RV
- Suitable for interior wall panels only
- Aluminium honeycomb panels
- Lightweight fire-rated panels
- Fire-rated heavyweight panels
- High density panels, where surface mount is required
- Interior FR alucobond panels
- Fire-rated access panels

INSTALLATION: Partially exploded through section showing typical installation method

Cutaway exploded view (nts)

